

# SOYBEANS

## S34-Z1 BRAND

RM:  
3.4



**SCN**  
SOLUTIONS.

### VERSATILITY WITH TOP-END YIELD ACROSS ENVIRONMENTS

- Very good Sudden Death Syndrome resistance
- Strong Soybean Cyst Nematode resistance
- Rps1c Phytophthora Root Rot gene with above average field tolerance

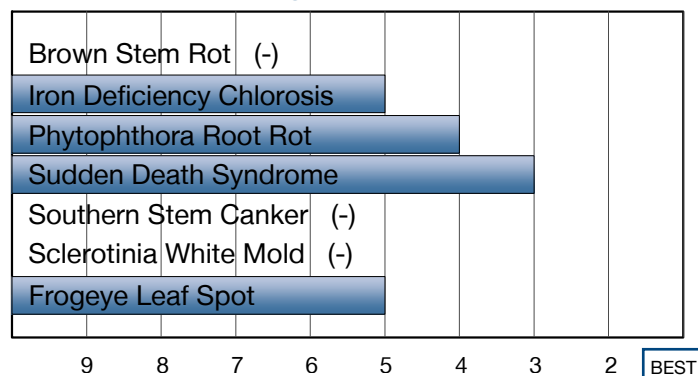
### Plant Characteristics

Plant Height	<b>Medium-Tall</b>
Canopy/Plant Type	<b>Medium-Bush</b>
Branching	<b>Moderate</b>
Growth Habit	<b>Indeterminate</b>
Flower Color	<b>White</b>
Pubescence Color	<b>Light Tawny</b>
Pod Color	<b>Tan</b>
Hilum Color	<b>Black</b>
Chloride Sensitivity	<b>Includer</b>

### Agronomic Traits

Emergence	<b>3</b>
Standability	<b>4</b>
Shatter Tolerance	<b>3</b>
Stress Tolerance	<b>2</b>
Green Stem	<b>4</b>
Estimated Seed Size	<b>Medium-Large</b>
% Protein at 13% mst.	<b>36.5</b>
% Oil at 13% mst.	<b>20.7</b>
Narrow Rows	<b>2</b>
Wide Rows	<b>1</b>

### Disease Ratings



### Adaptation to Soil Types

Drought Prone	
High pH*	
Highly Productive	
Moderate/Variable Environments	
Poorly Drained	
High Salinity	

### Diseases and Pests

Phytophthora Root Rot (PRR) Source	<b>Rps1c</b>
Soybean Cyst Nematode (SCN) Races	<b>R3, MR14</b>
(SCN) Source	<b>PI88788</b>

For more information or to view product performance data: [www.nk-us.com](http://www.nk-us.com) (800) 258-0521 Or, follow NK on Twitter @SyngentaUS or Facebook (Facebook.com/FarmAssist).

**Soybeans**

**syngenta**<sup>®</sup>

Ratings are based on interpretation of data gathered by Syngenta and/or observations across areas of adaptation and may change as additional data are gathered.

©2015 Syngenta, NK®, SCN Solutions™, the Alliance Frame and Syngenta logo are trademarks of a Syngenta Group Company. Genuity®, Genuity and Design, Genuity Icons, and Roundup Ready 2 Yield® are registered trademarks of Monsanto Technology LLC used under license. NK Soybean varieties are protected under granted or pending U.S. or Canadian variety patents and other intellectual property rights, regardless of the trait(s) within the seed. Seeds containing the Genuity® Roundup Ready 2 Yield® trait may be protected under numerous United States and Canadian patents. It is unlawful to save Genuity® Roundup Ready 2 Yield® soybeans for planting or transfer to others for use as a planting seed.

1-9 Scale: 1 = Best, 9 = Worst, (-) = Not Available, NA = Not Applicable.

Icon Scale: Best Choice Good Choice Average to Slightly Below Average Not Recommended

\* Rating represents an assessment of stand establishment, chlorosis severity and yield performance